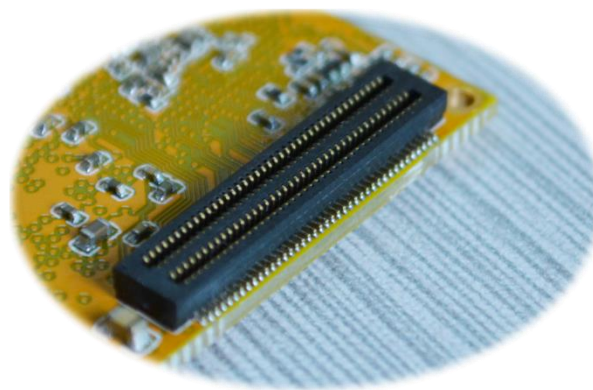
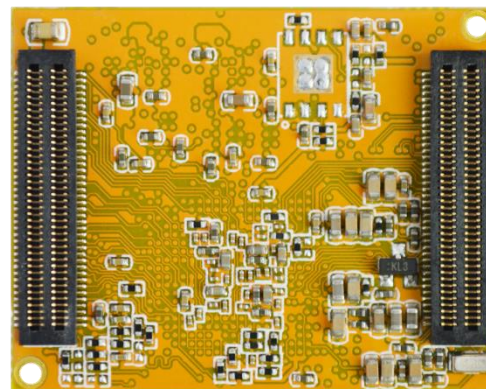
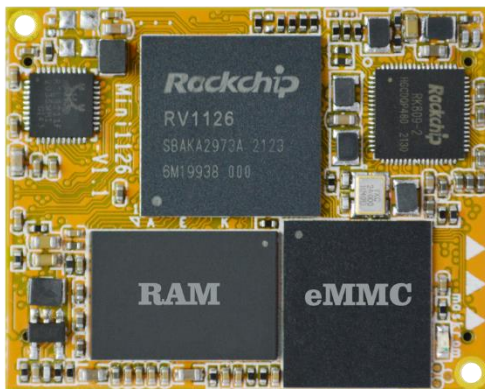




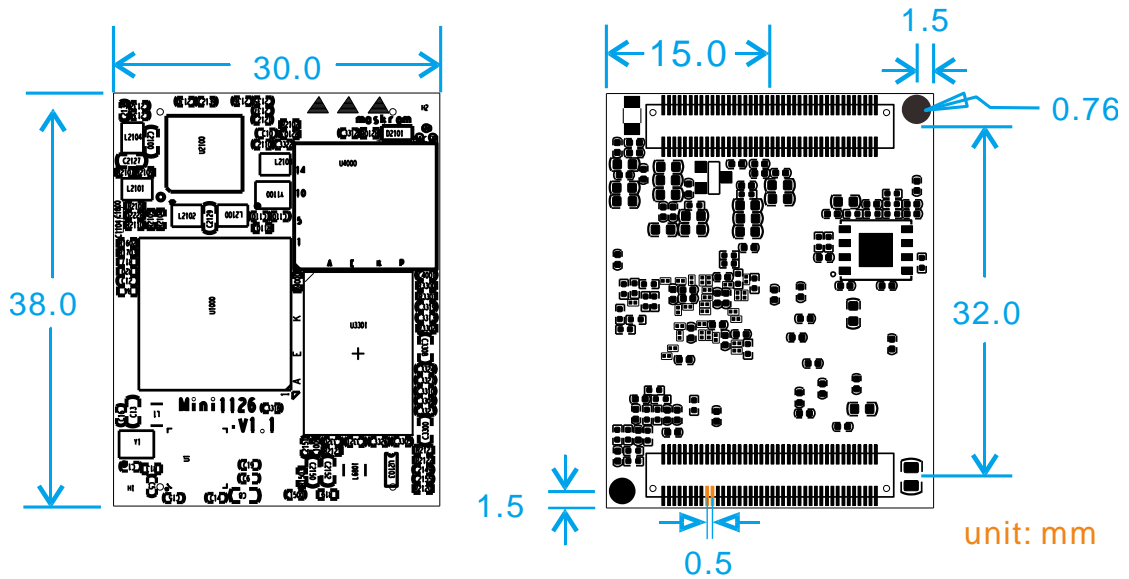
MINI1126

Interface Connection



1 PCB Dimension

Figure 1. PCB Dimension

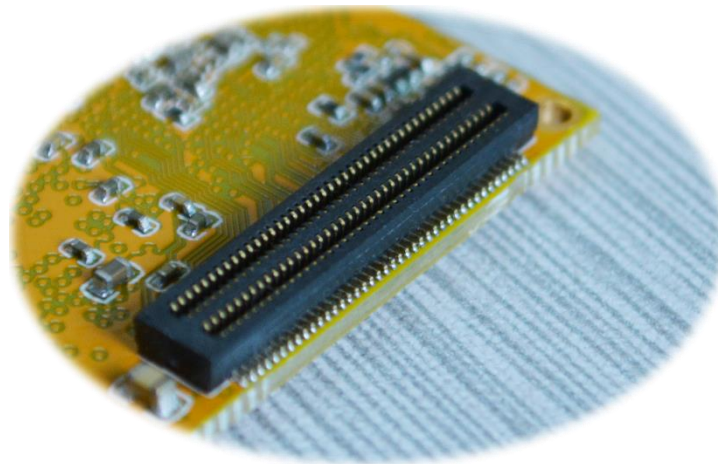


2 Interface Connection

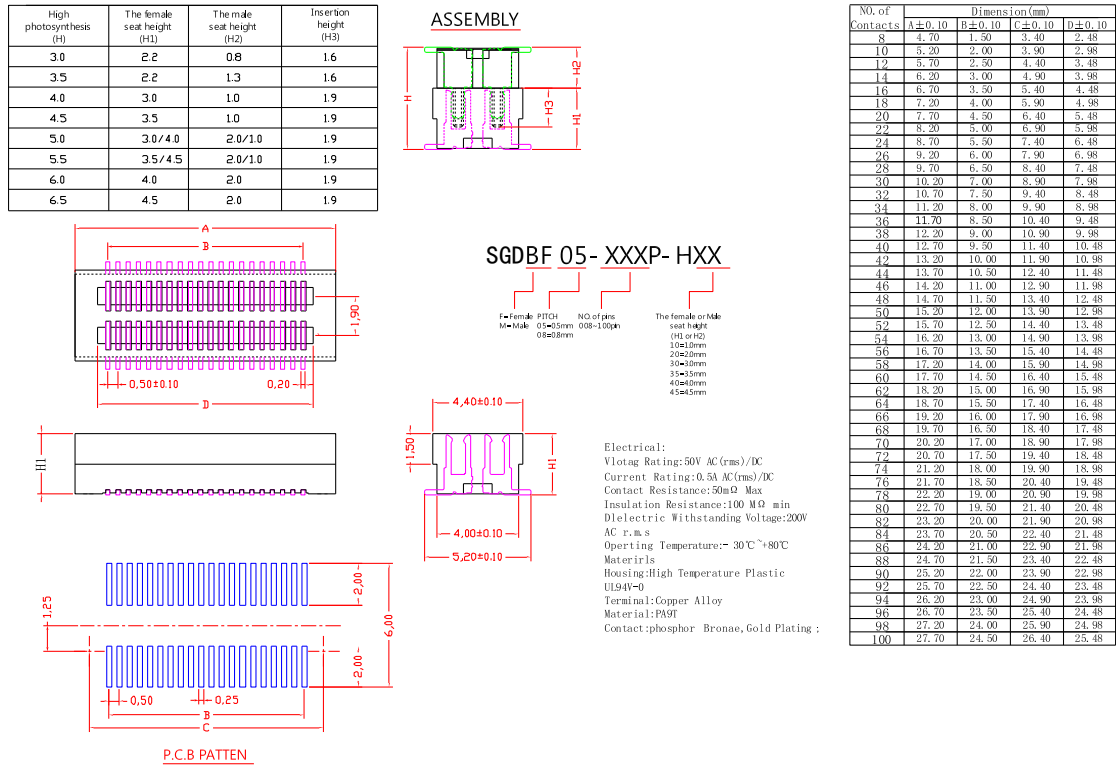
The [EM1126](#) carrier board and core board ([MINI1126](#)) is connected via a board-to-board (BTB) double groove connection. The female connector (SGDBF-05-80P-H20) is on the CPU board, and the male connector (SGDBM-05-80P-H10) on the baseboard.

2.1 Female Connectors Specifications (Female connector)

Figure 2. Female connector (SGDBF-05-80P-H20)

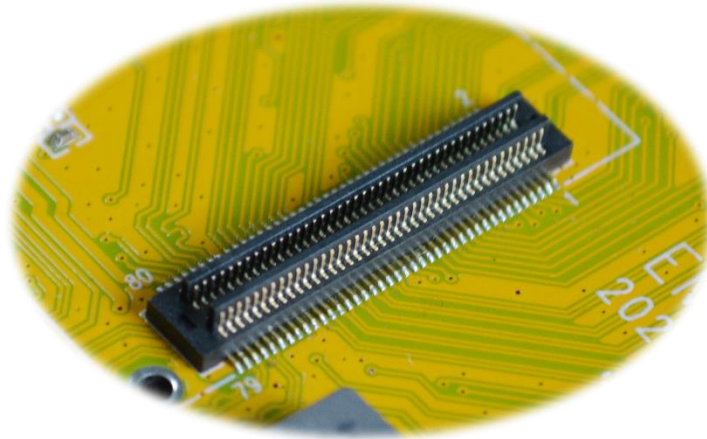


Pitch: 0.5mm
 Number of pins: 80pin
 The Female seat height: 2.0mm



2.2 Male Connector Specifications

Figure 3. Male connector (SGDBM-05-80P-H10)

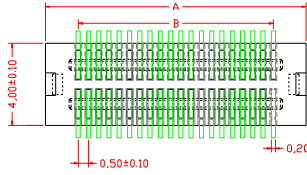
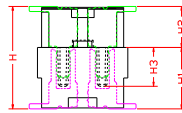


Pitch: 0.5mm
 Number of pins: 80pin
 The Male seat height: 1.0mm



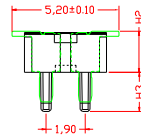
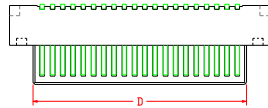
High photosynthesis (H)	The female seat height (H1)	The male seat height (H2)	Insertion height (H3)
3.0	2.2	0.8	1.6
3.5	2.2	1.3	1.6
4.0	3.0	1.0	1.9
4.5	3.5	1.0	1.9
5.0	3.0/4.0	2.0/1.0	1.9
5.5	3.5/4.5	2.0/1.0	1.9
6.0	4.0	2.0	1.9
6.5	4.5	2.0	1.9

ASSEMBLY



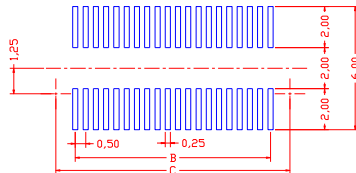
SGDBM-05-XXXX- HXX

F:Female DITCH
M:Male
NO. of pins 08-100pin
The female or Male seat height (H1 or H2)
10±1.0mm
20±2.0mm
30±3.0mm
40±4.0mm
45±4.5mm



Electrical:
Voltage Rating:50V AC(rms)/DC
Current Rating:0.5A AC(rms)/DC
Contact Resistance:50mΩ Max
Insulation Resistance:100MΩ min
Dielectric Withstanding Voltage:200V AC r.m.s
Operating Temperature:-30°C~+80°C

Materials:
Housing:High Temperature Plastic UL94V-0
Terminal:Copper Alloy
Material:PA9T
Contact:phosphor Bronze, Gold Plating:



P.C.B PATTEN

NO. of Contacts	Dimension(mm)			
	A±0.10	B±0.10	C±0.10	D±0.10
8	4.70	1.50	3.40	2.40
10	5.20	2.00	3.90	2.90
12	5.70	2.50	4.40	3.40
14	6.20	3.00	4.90	3.90
16	6.70	3.50	5.40	4.40
18	7.20	4.00	5.90	4.90
20	7.70	4.50	6.40	5.40
22	8.20	5.00	6.90	5.90
24	8.70	5.50	7.40	6.40
26	9.20	6.00	7.90	6.90
28	9.70	6.50	8.40	7.40
30	10.20	7.00	8.90	7.90
32	10.70	7.50	9.40	8.40
34	11.20	8.00	9.90	8.90
36	11.70	8.50	10.40	9.40
38	12.20	9.00	10.90	9.90
40	12.70	9.50	11.40	10.40
42	13.20	10.00	11.90	10.90
44	13.70	10.50	12.40	11.40
46	14.20	11.00	12.90	11.90
48	14.70	11.50	13.40	12.40
50	15.20	12.00	13.90	12.90
52	15.70	12.50	14.40	13.40
54	16.20	13.00	14.90	13.90
56	16.70	13.50	15.40	14.40
58	17.20	14.00	15.90	14.90
60	17.70	14.50	16.40	15.40
62	18.20	15.00	16.90	15.90
64	18.70	15.50	17.40	16.40
66	19.20	16.00	17.90	16.90
68	19.70	16.50	18.40	17.40
70	20.20	17.00	18.90	17.90
72	20.70	17.50	19.40	18.40
74	21.20	18.00	19.90	18.90
76	21.70	18.50	20.40	19.40
78	22.20	19.00	20.90	19.90
80	22.70	19.50	21.40	20.40
82	23.20	20.00	21.90	20.90
84	23.70	20.50	22.40	21.40
86	24.20	21.00	22.90	21.90
88	24.70	21.50	23.40	22.40
90	25.20	22.00	23.90	22.90
92	25.70	22.50	24.40	23.40
94	26.20	23.00	24.90	23.90
96	26.70	23.50	25.40	24.40
98	27.20	24.00	25.90	24.90
100	27.70	24.50	26.40	25.40