

# SSH usermanual

Note: When use SSH must makesure that the board and your pc in the same LAN.

## 1. In ubuntu use SSH

Connect lcd and ethernet cable to the board then power on the board. After the system boot input the follow command to view the IP.

```
ifconfig -a
```

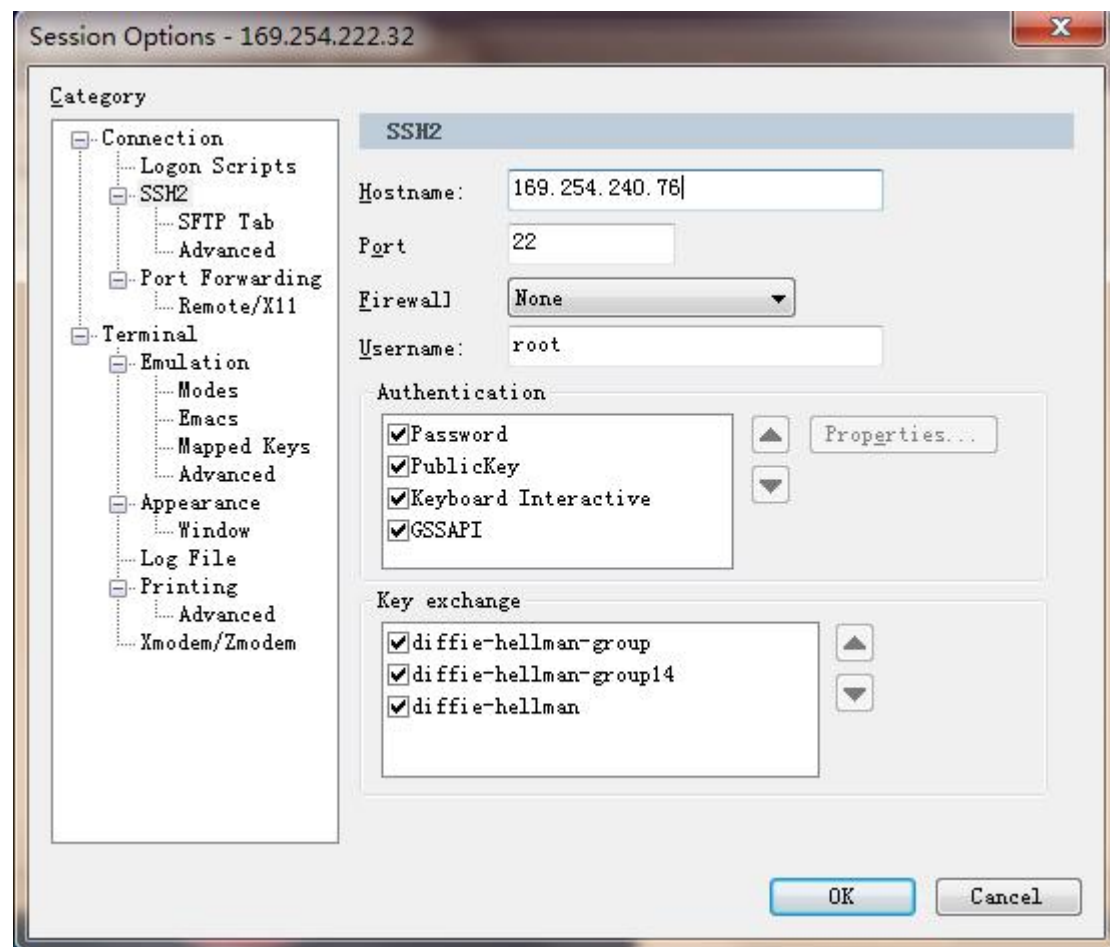
Then in ubuntu input the follow command to connect the board via SSH.

```
ssh root@169.254.240.76 (the IP is board IP)
```

```
exit (exit ssh)
```

## 2. In windows SecureCRT use SSH

Creat a new session, The Host name is the board IP. And the username is "root" show as follow:



Then connect to the board via SSH.